



DEPARTMENT OF THE NAVY

COMMANDER FLEET ACTIVITIES
SASEBO, JAPAN
PSC 476 BOX 1
FPO AP 96322-0001

5090
Ser 00/0275
26 May 20

From: Commander, Fleet Activities Sasebo
To: Parents and Staff

Subj: DARBY ELEMENTARY (BUILDING 5114) DRINKING WATER

Encl: (1) Overview of Testing Results for Lead in Drinking Water and Corrective Actions for CFAS Darby Elementary (Building 5114)
(2) Darby Elementary LIPA Results Summary Table-May 2020
(3) CFAS 5114 Darby Exceedances Floor Plan

I want to make you aware of the latest developments regarding our efforts to address elevated lead levels in drinking water that were reported on 17 October 2019 at the Commander, Fleet Activities Sasebo Darby Elementary School.

Recall, that on 18 October 2019, I informed you of the results of recent water testing of 159 outlets at the Darby Elementary. Of these, eight outlets tested higher than 15 parts per billion (ppb) screening level for lead. This is the Navy's designated level for action with additional testing and corrective measures.

We recently completed all corrective measures and additional testing showed that the levels at Darby Elementary are all below the screening level of 15 ppb.

Specifically, after the initial findings, we took the following corrective actions:

- We replaced the eight faucets with new faucets: four classroom faucets at the Science Classroom 262 and four bubblers at Classrooms 257, 258, 259 and 262. We conducted additional water sampling following these corrective measures and results confirm that the water from these faucets is now below the screening level of 15 ppb for lead.

I've attached the complete set of test results, which include the list of sampling locations and the purpose of the water outlet. As described above, for those locations that exceeded the recommended screening level on the first test, we conducted a follow-on resampling. The attachment provides details on which outlets required corrective action and the actions taken. For outlets where corrective actions were implemented, the attachment also shows the results of follow-on sampling to confirm lead levels below 15 ppb. I've also enclosed a floor plan which delineates locations where initial water sampling results exceeded 15 ppb. All outlets at the Darby Elementary are now below the screening level.

For your information, I am also including links to additional drinking water quality resources:

Subj: DARBY ELEMENTARY (BUILDING 5114) DRINKING WATER

Environmental Protection Agency (EPA) (lead in drinking water in schools and day care centers):

<https://www.epa.gov/dwreginfo/lead-drinking-water-schools-and-child-care-facilities>

Annual water quality report for the installation:

https://www.cnic.navy.mil/regions/cnrj/installations/cfa_sasebo/om/public_works/.html

Please be assured that my team and I will continue to monitor and test water quality at the Darby Elementary to ensure our drinking water complies with EPA regulations. If you have any concerns at all, please contact my Environmental Team, Ms. Elizabeth Barris (DSN 315-252-3369, elizabeth.barris@fe.navy.mil) and Mr. Frederick S. Pianalto (DSN 315-252-3263, frederick.pianalto@fe.navy.mil).

If you have any health related questions or concerns about lead exposure, you are encouraged to contact your health care provide or, if you are a TRICARE beneficiary, use the Region Appointment Center to schedule an appointment with your primary care provider at 1-877-678-1208 (+65-6339-2676 Japan).

Sincerely,



B. L. STALLINGS

Copy to:
CNIC N45
NAVFAC N45
BHC Sasebo

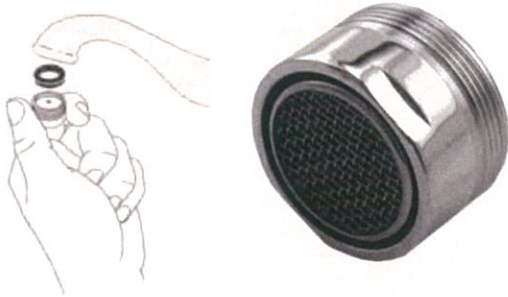
Overview of Testing Results for Lead in Drinking Water and Corrective Actions for CFAS Darby Elementary (Building 5114)

The Navy is committed to maintaining safe drinking water on its installations. Sasebo City water supplied to the Navy and the Navy's water distribution system is regularly tested and in compliance with the Safe Drinking Water Act. Because lead exposure is a particular concern for children, and lead may be added to drinking water due to its presence in pipes, fittings, solder, and fixtures inside a building, the Navy policy requires that we test the lead content of drinking water in priority areas such as schools, youth centers (YCs), child development group homes (CDGHs), and child development centers (CDCs) every five years.

Navy environmental personnel conducted lead testing at Darby Elementary in accordance with Navy and EPA guidelines. Samples from various locations in the elementary school were sent to a Navy-approved certified laboratory for analysis.

At Darby Elementary, outlets used for drinking, cooking, and washing were tested. Out of 159 samples collected, fifteen water outlets initially tested above the Navy screening level of 15 parts per billion (ppb) for lead in drinking water in schools and CDCs.

Seven of the fifteen faucets that exceeded 15 ppb were two classroom faucets in Room 159 (17 ppb and 19 ppb), a bubbler in Room 159 (51 ppb), a preparation faucet in Room 175 (17 ppb), a classroom faucet in Room 160 (17 ppb), an outdoors bubbler by Room 158 (100 ppb), and a classroom faucet in Room 262 (17 ppb). Follow-up sampling at these outlets was conducted after removing and cleaning the faucets, faucet aerators and hose bibb vacuum breakers. For example, a faucet aerator (or tap aerator) is often found at the tip of modern indoor water faucets. Without an aerator, water usually flows out of a faucet as one big stream. An aerator spreads this stream into many little droplets, which helps save water, provides more uniform flow, and reduces splashing. However, the aerator and screen can trap debris which can accumulate lead. A hose bibb vacuum breaker is attached to hose faucets to prevent backflow or back-siphonage into the water system.



After removing and cleaning the faucet aerators and hose bibb vacuum breakers, retesting showed that these faucets were below the screening level. The installation is implementing a periodic aerator maintenance plan to sustain this corrective action.

The remaining eight of the fifteen outlets that initially exceeded the screening level of 15 ppb were four bubblers in classrooms 257, 258 259 and 262 (lead values 18, 32, 28 and 34 ppm,

respectively), and four faucets in the Science classroom 262 (34, 22, 20 and 34 ppb). Since follow-up resampling indicated that the elevated levels of lead appeared to be caused by the components of the fixtures, these faucets were shut down from use. New faucets have been installed. Testing conducted after implementation of these corrective measures shows that these faucets are now below the screening level of 15 ppb.

A copy of all test results is enclosed for your information. The test results are presented in two tables:

- Table 1 **Summary of Results** summarizes the data by category of use (e.g., drinking, cooking, and washing).
- Table 2 **Summary Statistics** summarizes all the data.

A floor plan of the Darby Elementary has also been included to show the locations for the fixtures that exceeded 15 ppb.

Table 1 provides a description of each sampling location using three columns; *Category*, *Sampling ID*, and *Outlet Description*. The *Category* column gives information about whether the outlet is used for drinking water (water fountain), cooking (food preparation), or washing (primarily hand-washing or brushing teeth). The *Sample ID* column is the identification used to label each sample bottle. The *Outlet Description* column contains additional information to describe the outlet sampled under each category.

The next set of columns in **Table 1** provide *Initial Sampling Results*, and for those locations that exceeded the recommended screening level of 15 ppb the follow-up *Re-sampling Results*.

EPA sampling protocol requires water to not be used for between 8 and 18 hours prior to first draw sampling. Therefore, *Initial Sampling Results were from* first draw samples collected early in the morning before the building opened and before any water was used. The *Initial Sampling Results* also indicate whether resampling is required and the date that fixtures greater than 15 ppb were secured. Outlets that exceeded 15 ppb are highlighted in yellow.

The *Re-sampling Results* includes columns for *First Draw* and flushing samples which help determine the source of lead. For cooking and washing outlets, aerators were removed and cleaned before retesting:

- If the lead concentration of the 30 second flush sample resulted in lower than 15 ppb lead, the aerators or other faucet attachments were the source of lead and the outlet can be used for drinking if the aerators or attachments are cleaned on a regular basis. The two classroom faucets and a bubbler in Room 159, a preparation faucet in Room 175, a classroom faucet in Room 160, an outdoors bubbler by Room 158, and a classroom faucet in Room 262 fit in this category.
- If the lead concentration of the resampled first draw (but not the follow up 30 second flush) was greater than 15 ppb, the fixture was the source of lead. The four bubblers in

classrooms 257, 258 259 and 262 and the four faucets in the Science classroom 262 fit in this category. The faucets for this fixtures have been replaced, and post-remediation testing shows that the results are less than 15 ppb.

- If the lead concentration of the sample following the 30 second flush was greater than 15 ppb and greater than the lead concentration of the first draw resample, the source of lead is the plumbing upstream of the outlet. None of the fifteen faucets that were resampled after initial exceedance fit this category.

The *Corrective Actions* column describes actions that were taken to remediate the source of lead. In the event that fixtures or upstream piping are replaced (e.g. the four bubblers in classrooms 257, 258 259 and 262 and the four faucets in the Science classroom), there are columns for sampling data that confirms that the corrective actions were successful in reducing lead below 15 ppb.

To learn more about lead in drinking water in schools and day care centers visit the following EPA website: <https://www.epa.gov/dwreginfo/lead-drinking-water-schools-and-child-care-facilities>.

To learn more about the installation's public water supply, see our annual water quality report: https://www.cnic.navy.mil/regions/cnrj/installations/cfa_sasebo/om/public_works/.html

To answer any questions you may have on the sampling program, contact my Environmental Team, Ms. Elizabeth Barris (DSN 315-252-3369, elizabeth.barris@fe.navy.mil) and Mr. Frederick S. Pianalto (DSN 315-252-3263, frederick.pianalto@fe.navy.mil).

If you have any health questions or concerns, you are encouraged to contact your health care provider or, if you are a TRICARE beneficiary, use the Region Appointment Center to schedule an appointment with your primary care provider at 1-877-678-1208 (+65-6339-2676 Japan).

Table 1. Summary of Results

Darby Elementary - Hario

| SAMPLING LOCATION DESCRIPTION | | | | INITIAL SAMPLING RESULTS | | | RE-SAMPLING RESULTS | | | CORRECTIVE ACTIONS | POST REMEDIATION SAMPLING RESULTS | |
|---------------------------------|---------------|----------------------------------|----------|--|---------------------|--|--|---------------------|--|-------------------------------------|-----------------------------------|--|
| CATEGORY Water Intended For: | SAMPLE ID | Room Number - Outlet Description | Comments | Recommended Level = 15 parts per billion (ppb) | | | = 15 parts per billion (ppb) | | | | Description | Recommended Level = 15 ppb |
| | | | | First Draw (ppb) | Retest required? | Date Fixture Secured? (See Note 1) | Water Fountain 15 min. Follow up Flush Sample - Collected day before First Draw Sampling (ppb) | First Draw (ppb) | Follow up Flush - Collected 30 seconds after First Draw Sampling (ppb) | First Draw (ppb) (See note 2) | | Follow up Flush - Collected 30 seconds after First Draw Sampling (ppb) |
| SAMPLING DATE | | | | 6/18/2019 | | | | 9/14/2019 | 9/14/2019 | | 4/1/2020 | |
| RESULTS DATE | | | | 8/28/2019 | | | | 10/17/2019 | 10/17/2019 | | 5/1/2020 | |
| WASHING | 5114-F-1-19 | 104 NURSE OFFICE | FAUCET | 0.69 | NO | N/A | N/A | N/A | N/A | N/A | N/A | N/A |
| WASHING | 5114-F-2-19 | 105 TEACHERS LOUNGE | FAUCET | 0.82 | NO | N/A | N/A | N/A | N/A | N/A | N/A | N/A |
| DRINKING | 5114-C-3-19 | N/A HALLWAY NEXT TO RM 105 | COOLER | N.D. | NO | N/A | N/A | N/A | N/A | N/A | N/A | N/A |
| WASHING | 5114-F-5-19 | 112 TOILET | FAUCET | 4.5 | NO | N/A | N/A | N/A | N/A | N/A | N/A | N/A |
| WASHING | 5114-F-6-19 | 112 TOILET | FAUCET | 5.1 | NO | N/A | N/A | N/A | N/A | N/A | N/A | N/A |
| WASHING | 5114-F-7-19 | 112 TOILET | FAUCET | 2.3 | NO | N/A | N/A | N/A | N/A | N/A | N/A | N/A |
| WASHING | 5114-F-8-19 | 113 TOILET | FAUCET | 1 | NO | N/A | N/A | N/A | N/A | N/A | N/A | N/A |
| WASHING | 5114-F-9-19 | 113 TOILET | FAUCET | 0.93 | NO | N/A | N/A | N/A | N/A | N/A | N/A | N/A |
| WASHING | 5114-F-10-19 | 113 TOILET | FAUCET | 0.77 | NO | N/A | N/A | N/A | N/A | N/A | N/A | N/A |
| COOKING | 5114-F-11-19 | 135 KITCHEN IN RM 107 | FAUCET | 1.9 | NO | N/A | N/A | N/A | N/A | N/A | N/A | N/A |
| WASHING | 5114-F-12-19 | 109 TOILET | FAUCET | 1.6 | NO | N/A | N/A | N/A | N/A | N/A | N/A | N/A |
| WASHING | 5114-F-13-19 | 110 TOILET | FAUCET | 0.93 | NO | N/A | N/A | N/A | N/A | N/A | N/A | N/A |
| DRINKING | 5114-C-14-19 | N/A HALLWAY NEXT TO RM 114 | COOLER | N.D. | NO | N/A | N/A | N/A | N/A | N/A | N/A | N/A |
| DRINKING | 5114-C-15-19 | N/A HALLWAY NEXT TO RM 114 | COOLER | N.D. | NO | N/A | N/A | N/A | N/A | N/A | N/A | N/A |
| DRINKING | 5114-C-15A-19 | N/A HALLWAY NEXT TO RM 114 | COOLER | N.D. | NO | N/A | N/A | N/A | N/A | N/A | N/A | N/A |
| WASHING | 5114-F-16-19 | 114 STAFF RM | FAUCET | 2 | NO | N/A | N/A | N/A | N/A | N/A | N/A | N/A |
| WASHING | 5114-F-17-19 | 115 CLASSROOM | FAUCET | 4.8 | NO | N/A | N/A | N/A | N/A | N/A | N/A | N/A |
| WASHING | 5114-F-18-19 | 116 TOILET | FAUCET | 2.3 | NO | N/A | N/A | N/A | N/A | N/A | N/A | N/A |
| DRINKING | 5114-C-19-19 | N/A HALLWAY NEXT TO RM 123 | COOLER | N.D. | NO | N/A | N/A | N/A | N/A | N/A | N/A | N/A |
| DRINKING | 5114-C-20-19 | N/A HALLWAY NEXT TO RM 123 | COOLER | N.D. | NO | N/A | N/A | N/A | N/A | N/A | N/A | N/A |
| WASHING | 5114-F-21-19 | 118 CLASSROOM | FAUCET | 1.7 | NO | N/A | N/A | N/A | N/A | N/A | N/A | N/A |
| DRINKING | 5114-B-22-19 | 118 CLASSROOM | BUBBLER | N.D. | NO | N/A | N/A | N/A | N/A | N/A | N/A | N/A |
| WASHING | 5114-F-23-19 | 119 CLASSROOM | FAUCET | 3.2 | NO | N/A | N/A | N/A | N/A | N/A | N/A | N/A |
| DRINKING | 5114-B-24-19 | 119 CLASSROOM | BUBBLER | N.D. | NO | N/A | N/A | N/A | N/A | N/A | N/A | N/A |
| WASHING | 5114-F-25-19 | 120 CLASSROOM | FAUCET | 7.2 | NO | N/A | N/A | N/A | N/A | N/A | N/A | N/A |
| DRINKING | 5114-B-26-19 | 120 CLASSROOM | BUBBLER | 12 | NO | N/A | N/A | N/A | N/A | N/A | N/A | N/A |
| WASHING | 5114-F-27-19 | 121 CLASSROOM | FAUCET | 3 | NO | N/A | N/A | N/A | N/A | N/A | N/A | N/A |
| DRINKING | 5114-B-28-19 | 121 CLASSROOM | BUBBLER | 0.71 | NO | N/A | N/A | N/A | N/A | N/A | N/A | N/A |
| WASHING | 5114-F-29-19 | 123 ART RM | FAUCET | 14 | NO | N/A | N/A | N/A | N/A | N/A | N/A | N/A |
| WASHING | 5114-F-30-19 | 123 ART RM | FAUCET | 7.1 | NO | N/A | N/A | N/A | N/A | N/A | N/A | N/A |
| WASHING | 5114-F-31-19 | 123 ART RM | FAUCET | 4.6 | NO | N/A | N/A | N/A | N/A | N/A | N/A | N/A |
| WASHING | 5114-F-32-19 | 123 ART RM | FAUCET | 1.9 | NO | N/A | N/A | N/A | N/A | N/A | N/A | N/A |
| WASHING | 5114-F-33-19 | 123 ART RM | FAUCET | 3.6 | NO | N/A | N/A | N/A | N/A | N/A | N/A | N/A |
| WASHING | 5114-F-34-19 | 123 ART RM | FAUCET | 5 | NO | N/A | N/A | N/A | N/A | N/A | N/A | N/A |
| WASHING | 5114-F-36-19 | 124 TOILET | FAUCET | 1.3 | NO | N/A | N/A | N/A | N/A | N/A | N/A | N/A |
| WASHING | 5114-F-37-19 | 125 SUPPLY OFFICE | FAUCET | 2.9 | NO | N/A | N/A | N/A | N/A | N/A | N/A | N/A |
| WASHING | 5114-F-38-19 | 126 SUPPLY STORAGE | FAUCET | 1.9 | NO | N/A | N/A | N/A | N/A | N/A | N/A | N/A |
| COOKING | 5114-F-41-19 | 128 MAIN KITCHEN | FAUCET | N.D. | NO | N/A | N/A | N/A | N/A | N/A | N/A | N/A |
| COOKING | 5114-F-42-19 | 128 MAIN KITCHEN | FAUCET | N.D. | NO | N/A | N/A | N/A | N/A | N/A | N/A | N/A |
| COOKING | 5114-F-43-19 | 128 MAIN KITCHEN | FAUCET | 1.4 | NO | N/A | N/A | N/A | N/A | N/A | N/A | N/A |
| COOKING | 5114-F-44-19 | 128 MAIN KITCHEN | FAUCET | 0.57 | NO | N/A | N/A | N/A | N/A | N/A | N/A | N/A |
| COOKING | 5114-F-45-19 | 128 MAIN KITCHEN | FAUCET | 1.7 | NO | N/A | N/A | N/A | N/A | N/A | N/A | N/A |
| WASHING | 5114-F-46-19 | 142 LOCKER RM IN RM 128 | FAUCET | 1.9 | NO | N/A | N/A | N/A | N/A | N/A | N/A | N/A |
| WASHING | 5114-F-50-19 | 151 TOILET | FAUCET | 0.76 | NO | N/A | N/A | N/A | N/A | N/A | N/A | N/A |
| WASHING | 5114-F-51-19 | 152 TOILET | FAUCET | 0.62 | NO | N/A | N/A | N/A | N/A | N/A | N/A | N/A |
| WASHING | 5114-F-52-19 | 153 TOILET | FAUCET | 1.2 | NO | N/A | N/A | N/A | N/A | N/A | N/A | N/A |
| WASHING | 5114-F-53-19 | 154 TOILET | FAUCET | 1.4 | NO | N/A | N/A | N/A | N/A | N/A | N/A | N/A |
| DRINKING | 5114-C-54-19 | N/A HALLWAY NEXT TO RM155 | COOLER | N.D. | NO | N/A | N/A | N/A | N/A | N/A | N/A | N/A |
| DRINKING | 5114-C-55-19 | N/A HALLWAY NEXT TO RM155 | COOLER | N.D. | NO | N/A | N/A | N/A | N/A | N/A | N/A | N/A |
| WASHING | 5114-F-56-19 | 156 CLASSROOM | FAUCET | 0.58 | NO | N/A | N/A | N/A | N/A | N/A | N/A | N/A |
| WASHING | 5114-F-57-19 | 156 CLASSROOM | FAUCET | 0.5 | NO | N/A | N/A | N/A | N/A | N/A | N/A | N/A |
| WASHING | 5114-F-58-19 | 156 CLASSROOM | FAUCET | 1.2 | NO | N/A | N/A | N/A | N/A | N/A | N/A | N/A |
| WASHING | 5114-F-60-19 | 156 CLASSROOM | FAUCET | 1.8 | NO | N/A | N/A | N/A | N/A | N/A | N/A | N/A |
| WASHING | 5114-F-61-19 | 156 CLASSROOM | FAUCET | 1.2 | NO | N/A | N/A | N/A | N/A | N/A | N/A | N/A |
| WASHING | 5114-F-62-19 | 156 CLASSROOM | FAUCET | 5.8 | NO | N/A | N/A | N/A | N/A | N/A | N/A | N/A |
| DRINKING | 5114-B-63-19 | 156 CLASSROOM | BUBBLER | 0.72 | NO | N/A | N/A | N/A | N/A | N/A | N/A | N/A |
| WASHING | 5114-F-64-19 | 171 PREPARATION RM IN RM 156 | FAUCET | 9.7 | NO | N/A | N/A | N/A | N/A | N/A | N/A | N/A |
| WASHING | 5114-F-65-19 | 158 CLASSROOM | FAUCET | 3.2 | NO | N/A | N/A | N/A | N/A | N/A | N/A | N/A |
| WASHING | 5114-F-66-19 | 158 CLASSROOM | FAUCET | 0.61 | NO | N/A | N/A | N/A | N/A | N/A | N/A | N/A |
| WASHING | 5114-F-67-19 | 158 CLASSROOM | FAUCET | 0.57 | NO | N/A | N/A | N/A | N/A | N/A | N/A | N/A |
| WASHING | 5114-F-70-19 | 158 CLASSROOM | FAUCET | 2.7 | NO | N/A | N/A | N/A | N/A | N/A | N/A | N/A |
| WASHING | 5114-F-71-19 | 158 CLASSROOM | FAUCET | 2.9 | NO | N/A | N/A | N/A | N/A | N/A | N/A | N/A |
| WASHING | 5114-F-72-19 | 158 CLASSROOM | FAUCET | 7 | NO | N/A | N/A | N/A | N/A | N/A | N/A | N/A |
| DRINKING | 5114-B-73-19 | 158 CLASSROOM | BUBBLER | 1.4 | NO | N/A | N/A | N/A | N/A | N/A | N/A | N/A |
| WASHING | 5114-F-74-19 | 173 PREPARATION RM IN RM 158 | FAUCET | 5.8 | NO | N/A | N/A | N/A | N/A | N/A | N/A | N/A |
| WASHING | 5114-F-75-19 | 159 CLASSROOM | FAUCET | 17 | YES | 9/4/2019 | N/A | 1.8 | 0.75 | AERATOR MAINTENANCE | N/A | N/A |
| WASHING | 5114-F-76-19 | 159 CLASSROOM | FAUCET | 11 | NO | N/A | N/A | N/A | N/A | N/A | N/A | N/A |

| | | | | | | | | | | | | |
|----------|----------------|---------------------------------|---------|------|-----|----------|-----|------|------|---------------------|-----|-----|
| WASHING | 5114-F-77-19 | 159 CLASSROOM | FAUCET | 19 | YES | 9/4/2019 | N/A | 1.5 | 0.54 | AERATOR MAINTENANCE | N/A | N/A |
| DRINKING | 5114-B-78-19 | 159 CLASSROOM | BUBBLER | 51 | YES | 9/4/2019 | N/A | 2.6 | 0.79 | AERATOR MAINTENANCE | N/A | N/A |
| WASHING | 5114-F-79-19 | 159 CLASSROOM | FAUCET | 2.2 | NO | N/A | N/A | N/A | N/A | N/A | N/A | N/A |
| WASHING | 5114-F-80-19 | 159 CLASSROOM | FAUCET | N.D. | NO | N/A | N/A | N/A | N/A | N/A | N/A | N/A |
| WASHING | 5114-F-81-19 | 159 CLASSROOM | FAUCET | 0.85 | NO | N/A | N/A | N/A | N/A | N/A | N/A | N/A |
| WASHING | 5114-F-83-19 | 175 PREPARATION RM IN RM 159 | FAUCET | 17 | YES | 9/4/2019 | N/A | 1.9 | 0.5 | AERATOR MAINTENANCE | N/A | N/A |
| WASHING | 5114-F-84-19 | 160 CLASSROOM | FAUCET | 17 | YES | 9/4/2019 | N/A | 2.9 | N.D. | AERATOR MAINTENANCE | N/A | N/A |
| DRINKING | 5114-B-85-19 | 160 CLASSROOM | BUBBLER | 4.2 | NO | N/A | N/A | N/A | N/A | N/A | N/A | N/A |
| WASHING | 5114-F-86-19 | 161 CLASSROOM | FAUCET | 1.6 | NO | N/A | N/A | N/A | N/A | N/A | N/A | N/A |
| DRINKING | 5114-B-87-19 | 161 CLASSROOM | BUBBLER | 2.7 | NO | N/A | N/A | N/A | N/A | N/A | N/A | N/A |
| WASHING | 5114-F-88-19 | 162 CLASSROOM | FAUCET | 3.4 | NO | N/A | N/A | N/A | N/A | N/A | N/A | N/A |
| DRINKING | 5114-B-89-19 | 162 CLASSROOM | BUBBLER | 9 | NO | N/A | N/A | N/A | N/A | N/A | N/A | N/A |
| WASHING | 5114-F-90-19 | 164 TEACHERS LOUNGE | FAUCET | 5.2 | NO | N/A | N/A | N/A | N/A | N/A | N/A | N/A |
| WASHING | 5114-F-91-19 | N/A OUTSIDE FAUCET BY 105 | FAUCET | 1.1 | NO | N/A | N/A | N/A | N/A | N/A | N/A | N/A |
| WASHING | 5114-F-92-19 | N/A OUTSIDE FAUCET BY 106 | FAUCET | 8.4 | NO | N/A | N/A | N/A | N/A | N/A | N/A | N/A |
| WASHING | 5114-F-93-19 | N/A OUTSIDE FAUCET BY 115 | FAUCET | 5.1 | NO | N/A | N/A | N/A | N/A | N/A | N/A | N/A |
| WASHING | 5114-F-94-19 | N/A OUTSIDE FAUCET BY 119 | FAUCET | 2.2 | NO | N/A | N/A | N/A | N/A | N/A | N/A | N/A |
| WASHING | 5114-F-95-19 | N/A OUTSIDE FAUCET BY 144 | FAUCET | 0.66 | NO | N/A | N/A | N/A | N/A | N/A | N/A | N/A |
| WASHING | 5114-F-96-19 | N/A OUTSIDE FAUCET BY 125 | FAUCET | 1.3 | NO | N/A | N/A | N/A | N/A | N/A | N/A | N/A |
| WASHING | 5114-F-97-19 | N/A OUTSIDE FAUCET BY 128 | FAUCET | 1.4 | NO | N/A | N/A | N/A | N/A | N/A | N/A | N/A |
| WASHING | 5114-F-99-19 | N/A OUTSIDE FAUCET BY 128 PLAY | FAUCET | 6.8 | NO | N/A | N/A | N/A | N/A | N/A | N/A | N/A |
| DRINKING | 5114-B-100-19 | N/A OUTSIDE BUBBLER BY 156 PLAY | BUBBLER | 2.8 | NO | N/A | N/A | N/A | N/A | N/A | N/A | N/A |
| DRINKING | 5114-B-101-19 | N/A OUTSIDE BUBBLER BY 158 PLAY | BUBBLER | 100 | YES | 9/4/2019 | N/A | 9.73 | 1.6 | AERATOR MAINTENANCE | N/A | N/A |
| WASHING | 5114-F-102-19 | N/A OUTSIDE FAUCET BY 158 PLAY | FAUCET | 6.3 | NO | N/A | N/A | N/A | N/A | N/A | N/A | N/A |
| WASHING | 5114-F-103-19 | N/A OUTSIDE FAUCET BY 158 | FAUCET | 11 | NO | N/A | N/A | N/A | N/A | N/A | N/A | N/A |
| WASHING | 5114-F-104-19 | N/A OUTSIDE FAUCET BY MAIN | FAUCET | 12 | NO | N/A | N/A | N/A | N/A | N/A | N/A | N/A |
| WASHING | 5114-F-105-19 | 105 TOILET IN RM 105 | FAUCET | 0.95 | NO | N/A | N/A | N/A | N/A | N/A | N/A | N/A |
| WASHING | 5114-F-106-19 | 105 TOILET IN RM 105 | FAUCET | 0.9 | NO | N/A | N/A | N/A | N/A | N/A | N/A | N/A |
| WASHING | 5114-F-107-19 | N/A OUTSIDE FAUCET BY 121 | FAUCET | N.D. | NO | N/A | N/A | N/A | N/A | N/A | N/A | N/A |
| COOKING | 5114-F-108-19 | 128 MAIN KITCHEN | FAUCET | 1.6 | NO | N/A | N/A | N/A | N/A | N/A | N/A | N/A |
| WASHING | 5114-F-110-19 | 152 TOILET | FAUCET | 1.6 | NO | N/A | N/A | N/A | N/A | N/A | N/A | N/A |
| WASHING | 5114-F-111-19 | 153 TOILET | FAUCET | 0.99 | NO | N/A | N/A | N/A | N/A | N/A | N/A | N/A |
| WASHING | 5114-F1-1-19 | 201 CLASSROOM | FAUCET | 6 | NO | N/A | N/A | N/A | N/A | N/A | N/A | N/A |
| WASHING | 5114-F1-2-19 | 202 CLASSROOM | FAUCET | N.D. | NO | N/A | N/A | N/A | N/A | N/A | N/A | N/A |
| WASHING | 5114-F1-3-19 | 203 CLASSROOM | FAUCET | 0.7 | NO | N/A | N/A | N/A | N/A | N/A | N/A | N/A |
| WASHING | 5114-F1-4-19 | 207 CLASSROOM | FAUCET | 1.5 | NO | N/A | N/A | N/A | N/A | N/A | N/A | N/A |
| WASHING | 5114-F1-5-19 | 208 CLASSROOM | FAUCET | 0.66 | NO | N/A | N/A | N/A | N/A | N/A | N/A | N/A |
| WASHING | 5114-F1-8-19 | 212 TOILET | FAUCET | 0.85 | NO | N/A | N/A | N/A | N/A | N/A | N/A | N/A |
| WASHING | 5114-F1-9-19 | 212 TOILET | FAUCET | 0.63 | NO | N/A | N/A | N/A | N/A | N/A | N/A | N/A |
| WASHING | 5114-F1-10-19 | 212 TOILET | FAUCET | 0.96 | NO | N/A | N/A | N/A | N/A | N/A | N/A | N/A |
| WASHING | 5114-F1-11-19 | 212 TOILET | FAUCET | 4.9 | NO | N/A | N/A | N/A | N/A | N/A | N/A | N/A |
| WASHING | 5114-F1-12-19 | 213 TOILET | FAUCET | N.D. | NO | N/A | N/A | N/A | N/A | N/A | N/A | N/A |
| WASHING | 5114-F1-13-19 | 213 TOILET | FAUCET | 4.7 | NO | N/A | N/A | N/A | N/A | N/A | N/A | N/A |
| WASHING | 5114-F1-14-19 | 213 TOILET | FAUCET | 1.2 | NO | N/A | N/A | N/A | N/A | N/A | N/A | N/A |
| WASHING | 5114-F1-15-19 | 213 TOILET | FAUCET | 3.5 | NO | N/A | N/A | N/A | N/A | N/A | N/A | N/A |
| DRINKING | 5114-C1-16-19 | N/A HALLWAY NEXT TO RM 228 | COOLER | N.D. | NO | N/A | N/A | N/A | N/A | N/A | N/A | N/A |
| DRINKING | 5114-C1-16A-19 | N/A HALLWAY NEXT TO RM 228 | COOLER | N.D. | NO | N/A | N/A | N/A | N/A | N/A | N/A | N/A |
| WASHING | 5114-F1-17-19 | 228 HOST NATION RM | FAUCET | 0.92 | NO | N/A | N/A | N/A | N/A | N/A | N/A | N/A |
| WASHING | 5114-F1-19-19 | 216 TOILET | FAUCET | 0.91 | NO | N/A | N/A | N/A | N/A | N/A | N/A | N/A |
| DRINKING | 5114-C1-20-19 | N/A HALLWAY NEXT TO RM 217 | COOLER | N.D. | NO | N/A | N/A | N/A | N/A | N/A | N/A | N/A |
| WASHING | 5114-F1-21-19 | 218 CLASSROOM | FAUCET | 2.5 | NO | N/A | N/A | N/A | N/A | N/A | N/A | N/A |
| DRINKING | 5114-B1-22-19 | 218 CLASSROOM | BUBBLER | N.D. | NO | N/A | N/A | N/A | N/A | N/A | N/A | N/A |
| WASHING | 5114-F1-23-19 | 221 CLASSROOM | FAUCET | 3.4 | NO | N/A | N/A | N/A | N/A | N/A | N/A | N/A |
| DRINKING | 5114-B1-24-19 | 221 CLASSROOM | BUBBLER | N.D. | NO | N/A | N/A | N/A | N/A | N/A | N/A | N/A |
| WASHING | 5114-F1-25-19 | 222 TEACHERS RM | FAUCET | 1.8 | NO | N/A | N/A | N/A | N/A | N/A | N/A | N/A |
| WASHING | 5114-F1-26-19 | 223 CLASSROOM | FAUCET | 5.2 | NO | N/A | N/A | N/A | N/A | N/A | N/A | N/A |
| DRINKING | 5114-B1-27-19 | 223 CLASSROOM | BUBBLER | N.D. | NO | N/A | N/A | N/A | N/A | N/A | N/A | N/A |
| WASHING | 5114-F1-28-19 | 224 TOILET | FAUCET | 1.7 | NO | N/A | N/A | N/A | N/A | N/A | N/A | N/A |
| DRINKING | 5114-C1-29-19 | N/A HALLWAY NEXT TO RM 217 | COOLER | N.D. | NO | N/A | N/A | N/A | N/A | N/A | N/A | N/A |
| DRINKING | 5114-C2-4-19 | N/A HALLWAY NEXT TO RM 255 | COOLER | N.D. | NO | N/A | N/A | N/A | N/A | N/A | N/A | N/A |
| WASHING | 5114-F2-5-19 | 252 TOILET | FAUCET | 2.3 | NO | N/A | N/A | N/A | N/A | N/A | N/A | N/A |
| WASHING | 5114-F2-6-19 | 252 TOILET | FAUCET | 0.55 | NO | N/A | N/A | N/A | N/A | N/A | N/A | N/A |
| WASHING | 5114-F2-7-19 | 252 TOILET | FAUCET | 0.72 | NO | N/A | N/A | N/A | N/A | N/A | N/A | N/A |
| WASHING | 5114-F2-8-19 | 253 TOILET | FAUCET | 1 | NO | N/A | N/A | N/A | N/A | N/A | N/A | N/A |
| WASHING | 5114-F2-9-19 | 253 TOILET | FAUCET | N.D. | NO | N/A | N/A | N/A | N/A | N/A | N/A | N/A |
| WASHING | 5114-F2-10-19 | 253 TOILET | FAUCET | 0.71 | NO | N/A | N/A | N/A | N/A | N/A | N/A | N/A |
| WASHING | 5114-F2-11-19 | 256 CLASSROOM | FAUCET | 7.7 | NO | N/A | N/A | N/A | N/A | N/A | N/A | N/A |
| DRINKING | 5114-B2-12-19 | 256 CLASSROOM | BUBBLER | 4.7 | NO | N/A | N/A | N/A | N/A | N/A | N/A | N/A |
| WASHING | 5114-F2-13-19 | 257 CLASSROOM | FAUCET | 2.8 | NO | N/A | N/A | N/A | N/A | N/A | N/A | N/A |
| DRINKING | 5114-B2-14-19 | 257 CLASSROOM | BUBBLER | 18 | YES | 9/4/2019 | N/A | 18 | 2.7 | REPLACE FAUCET | 7.7 | N/A |
| WASHING | 5114-F2-15-19 | 258 CLASSROOM | FAUCET | 8.3 | NO | N/A | N/A | N/A | N/A | N/A | N/A | N/A |
| DRINKING | 5114-B2-16-19 | 258 CLASSROOM | BUBBLER | 32 | YES | 9/4/2019 | N/A | 33 | 3.6 | REPLACE FAUCET | 7 | N/A |
| WASHING | 5114-F2-17-19 | 273 PREPARATION RM IN RM 258 | FAUCET | 10 | NO | N/A | N/A | N/A | N/A | N/A | N/A | N/A |
| WASHING | 5114-F2-18-19 | 259 CLASSROOM | FAUCET | 7.7 | NO | N/A | N/A | N/A | N/A | N/A | N/A | N/A |
| DRINKING | 5114-B2-19-19 | 259 CLASSROOM | BUBBLER | 28 | YES | 9/4/2019 | N/A | 31 | 7.4 | REPLACE FAUCET | 14 | N/A |
| WASHING | 5114-F2-20-19 | 275 PREPARATION RM IN RM 259 | FAUCET | 4 | NO | N/A | N/A | N/A | N/A | N/A | N/A | N/A |
| WASHING | 5114-F2-21-19 | 260 CLASSROOM | FAUCET | 2.7 | NO | N/A | N/A | N/A | N/A | N/A | N/A | N/A |
| DRINKING | 5114-B2-22-19 | 260 CLASSROOM | BUBBLER | 4.9 | NO | N/A | N/A | N/A | N/A | N/A | N/A | N/A |
| WASHING | 5114-F2-23-19 | 261 CLASSROOM | FAUCET | 3.3 | NO | N/A | N/A | N/A | N/A | N/A | N/A | N/A |
| DRINKING | 5114-B2-24-19 | 261 CLASSROOM | BUBBLER | 12 | NO | N/A | N/A | N/A | N/A | N/A | N/A | N/A |
| WASHING | 5114-F2-25-19 | 262 SCIENCE RM | FAUCET | 34 | YES | 9/4/2019 | N/A | 21 | 1.6 | REPLACE FAUCET | 9.1 | N/A |
| WASHING | 5114-F2-26-19 | 262 SCIENCE RM | FAUCET | 22 | YES | 9/4/2019 | N/A | 16 | 1.3 | REPLACE FAUCET | 5.7 | N/A |
| WASHING | 5114-F2-27-19 | 262 SCIENCE RM | FAUCET | 47 | YES | 9/4/2019 | N/A | 8.3 | 1.5 | AERATOR MAINTENANCE | N/A | N/A |
| WASHING | 5114-F2-28-19 | 262 SCIENCE RM | FAUCET | 13 | NO | N/A | N/A | N/A | N/A | N/A | N/A | N/A |
| WASHING | 5114-F2-29-19 | 262 SCIENCE RM | FAUCET | 9.6 | NO | N/A | N/A | N/A | N/A | N/A | N/A | N/A |

| | | | | | | | | | | | | |
|----------|---------------|----------------------------|---------|------|-----|----------|-----|-----|-----|----------------|-----|-----|
| WASHING | 5114-F2-30-19 | 262 SCIENCE RM | FAUCET | 6.1 | NO | N/A | N/A | N/A | N/A | N/A | N/A | N/A |
| WASHING | 5114-F2-31-19 | 262 SCIENCE RM | FAUCET | 20 | YES | 9/4/2019 | N/A | 17 | 1.9 | REPLACE FAUCET | 5.4 | N/A |
| DRINKING | 5114-B2-32-19 | 262 SCIENCE RM | BUBBLER | 34 | YES | 9/4/2019 | N/A | 42 | 3.2 | REPLACE FAUCET | 8.7 | N/A |
| WASHING | 5114-F2-33-19 | 265 SCIENCE PREPARATION RM | FAUCET | 6 | NO | N/A | N/A | N/A | N/A | N/A | N/A | N/A |
| WASHING | 5114-F2-34-19 | 266 STAFF RM | FAUCET | 7.4 | NO | N/A | N/A | N/A | N/A | N/A | N/A | N/A |
| WASHING | 5114-F2-35-19 | 262 SCIENCE RM | FAUCET | 34 | YES | 9/4/2019 | N/A | 30 | 2.8 | REPLACE FAUCET | 5.7 | N/A |
| DRINKING | 5114-C2-3-19 | N/A HALLWAY NEXT TO RM 225 | COOLER | N.D. | NO | N/A | N/A | N/A | N/A | N/A | N/A | N/A |

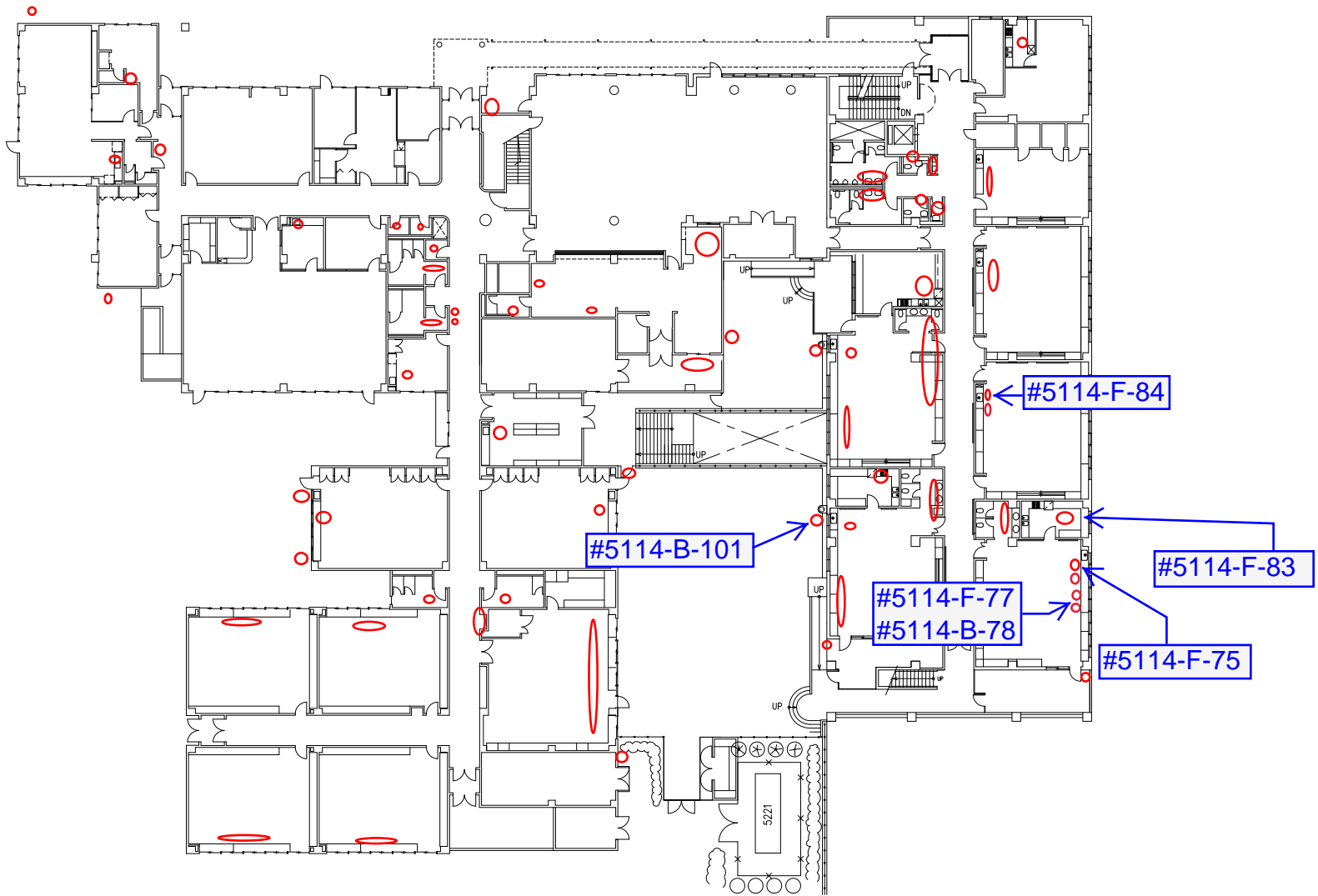
Notes: N.D. is Not-Detected above laboratory reporting limit.

¹ Affected outlets were immediately secured after receiving verbal communication from the lab on results exceeding the recommended level of 15 ppb.

² Faucet replacements were implemented. Post-remediation sampling was conducted on 4/1/2020 and final results below recommended level of 15 ppb as shown on the table.

Table 2. Summary Statistics

| CATEGORY | INITIAL SAMPLING RESULTS | | RE-SAMPLING RESULTS | | | | POST REMEDIATION RESULTS |
|---------------------------|--------------------------|--|--|---|--|---|--------------------------|
| | First Draw (ppb) | | Recommended Level = 15 parts per billion (ppb) | | | | First Draw (ppb) |
| | | | First Draw (ppb) | Follow up Flush - Collected 30 seconds after First Draw Sampling (ppb) | | | |
| Total Drinking | 36 | | 6 | 6 | | 4 | |
| Total Drinking > 15 ppb | 6 | | 4 | 0 | | 0 | |
| Total Cook/Brush | 7 | | 0 | 0 | | 0 | |
| Total Cook/Brush > 15 ppb | 0 | | 0 | 0 | | 0 | |
| Total Washing | 116 | | 9 | 9 | | 4 | |
| Total Washing > 15 ppb | 9 | | 4 | 0 | | 0 | |
| Total Samples | 159 | | 15 | 15 | | 8 | |
| Total Samples > 15 ppb | 15 | | 8 | 0 | | 0 | |



1ST FLOOR PLAN : BLDG.#5114

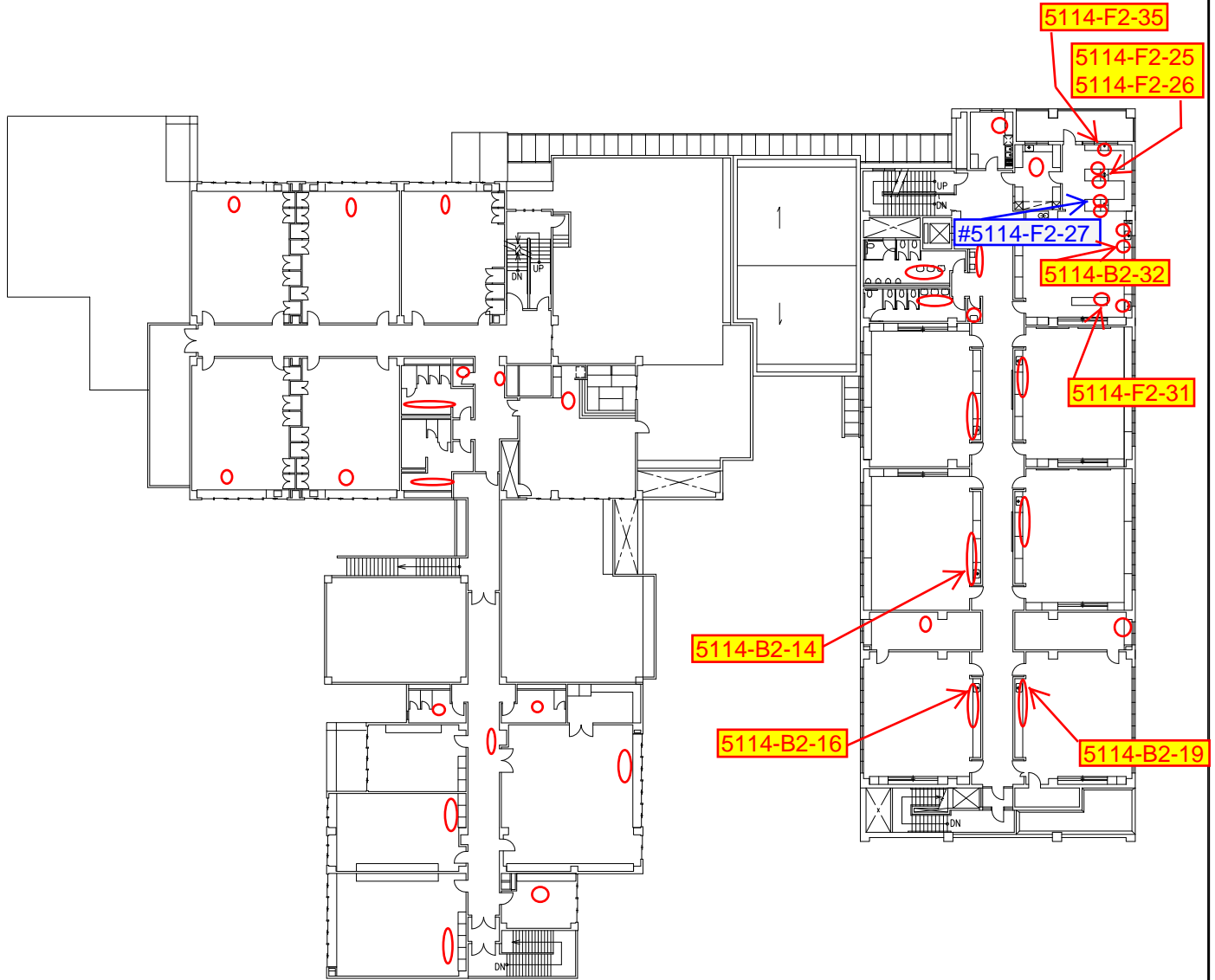


Red circles indicate initial sampling locations

#5114-F-84

Blue boxes (with # sign) indicate location and ID number of fixtures requiring aerator maintenance

| | | | | |
|---------|--------------|--|---|----------------------|
| | TITLE | | PUBLIC WORKS DEPT. U.S. FLEACT SASEBO JAPAN | |
| KEY NO. | SATISFACTORY | | SKETCHED BY | |
| | APPROVED | | CONTRACT NO. N62836- | SHT. NO. PWD DWG NO. |
| | | | SUPV FAC.DIV.DIR | |



2nd FLOOR PALN : BLDG.#5114

○ Red circles indicate initial sampling locations

5114-F2-31 Yellow boxes (shaded) indicate location and ID number of fixtures requiring faucet replacement

#5114-F2-27 Blue boxes (with # sign) indicate location and ID number of fixtures requiring aerator maintenance

| | | | | |
|---------|-----------------|-------------------------|---|-------------|
| KEY NO. | TITLE | | PUBLIC WORKS DEPT. U.S. FLEACT SASEBO JAPAN | |
| | SATISFACTORY TO | SKETCHED BY | SUPV | |
| | APPROVED | CONTRACT NO. N62836- | SHT. NO. | PWD DWG NO. |